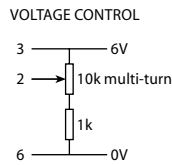


PIN	CONNECTION
1	Case
2	Freq Adjustment
3	+6V output
4	RF output
5	Supply
6	Ground



Scale 1:1

Specifications

HCD71: Low profile, cost effective, sine output

HCD170: High performance version of HCD71

Parameters	Product		Option Codes
	HCD71	HCD170	
Frequency range: 4.0 ~ 60.0MHz	■	■	
Frequency stability: $\pm 1 \times 10^{-8}$ / day at despatch $\pm 5 \times 10^{-9}$ / day at despatch $\pm 7.5 \times 10^{-7}$ / year max $\pm 5 \times 10^{-7}$ / year max $\pm 1 \times 10^{-7}$ per 5% change in V_{DD}	■	■	
Temperature stability: $\pm 2 \times 10^{-7}$ over -20 to +60°C $\pm 5 \times 10^{-8}$ over -20 to +60°C	■	■	
Operating temperature range: -20 to +60°C Other options from -40°C	■	■	specify
Storage temperature range: -40 to +90°C	■	■	
Output waveform: Sine wave, 1.5V p-p $\pm 0.5V$ into 50Ω Other options available	■	■	specify
Frequency adjustment: $\pm 2 \times 10^{-5}$ typ, +0.5 to +6.0V (sufficient for 10 years ageing min) Stabilised +6.0V supply provided	■	■	
Supply voltage (V_{DD}): +12.0V ($\pm 0.5V$) Other options from 10~30V	■	■	specify
Power consumption: 4.5W max at switch on 1.2W typ when stabilised at 25°C 1.0W typ when stabilised at 25°C	■	■	
Warm up: $\pm 5 \times 10^{-8}$ after 10mins at +25°C	■	■	
Phase noise (@ 10.0MHz): $< -110\text{dBc/Hz}$ @ 10Hz $< -130\text{dBc/Hz}$ @ 100Hz $< -145\text{dBc/Hz}$ @ 1kHz $< -150\text{dBc/Hz}$ @ 10kHz	■	■	
Shock: IEC 68-2-27 Test Ea 50G for 11ms	■	■	
Vibration: IEC 68-2-06 Test Fc 10-55Hz, 1.5mm. 55-500Hz, 10G	■	■	

■ Standard. □ Optional - Please specify required code(s) when ordering

Features

- ▶ **Low profile package**
- ▶ **Cost effective**
- ▶ **Wide frequency range**
- ▶ **Custom options available**
- ▶ **Simple upgrade path (HCD71 to HCD170)**

Ordering Information

Product name + frequency

eg: **HCD71 10.0MHz**

HCD170 10.0MHz

Option code X (eg HCD71/X) denotes a custom specification.